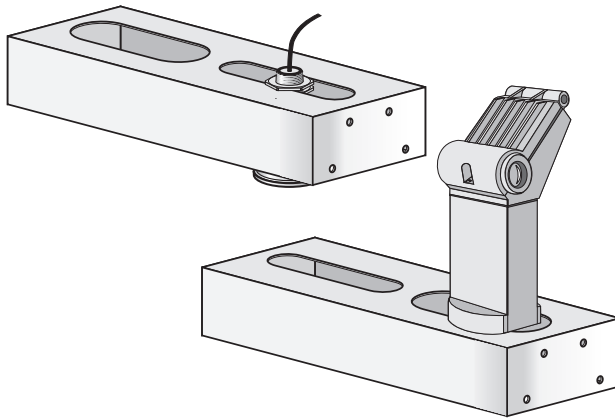
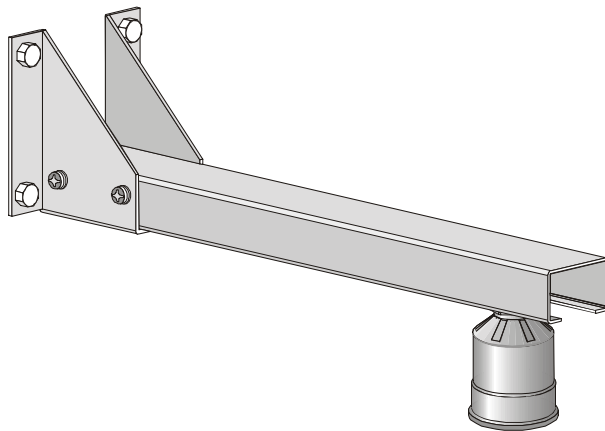


Installing ultrasonic devices is simple and fast with mounting brackets from Milltronics. These rugged, high quality mounting brackets are constructed of stainless steel and suitable for use indoors and outdoors. They adjust to fit almost any application, saving you the time and expense of building custom brackets. Each kit includes sensor mounting hardware.



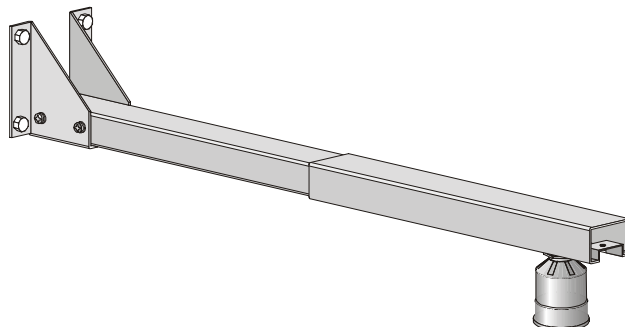
FMS-200
Universal Box Bracket

Allows any unit with a threaded 1" or 2" connection to be mounted 20 to 31 cm (8 to 12") out from a wall or beam. The unique box design also acts as a sun shield for transducers with threaded 1" connections.



FMS-210
Channel Bracket, Wall Mount

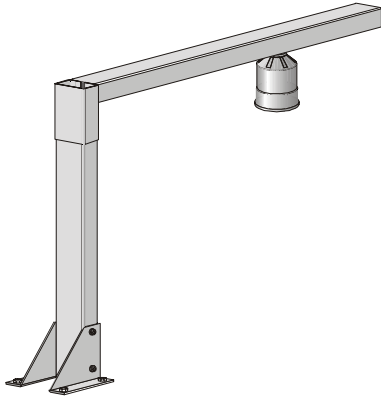
Allows any transducer with a threaded 1" connection to be mounted 12 to 48 cm (5 to 19") out from a wall or beam.



FMS-220
Extended Channel Bracket

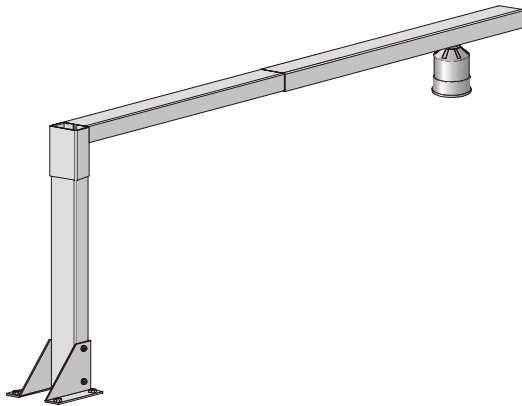
Allows any transducer with a threaded 1" connection to be mounted 32 to 98 cm (13 to 39") out from a wall or beam.

Mounting Brackets



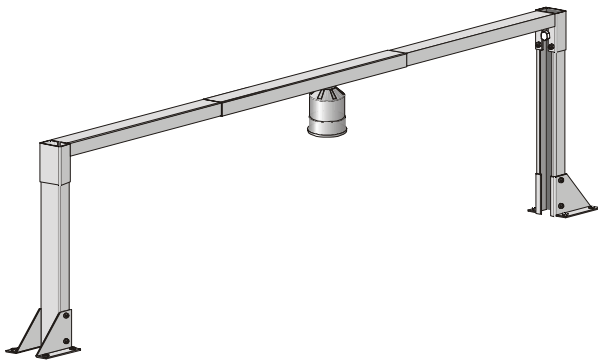
FMS-310
Channel Bracket, Floor Mount

Allows any transducer with a threaded 1" connection to be mounted from 20 to 48 cm (8 to 19") high and from 5 to 57 cm (2 to 22") out past the mounting.



FMS-320
Extended Channel Bracket, Floor Mount

Allows any transducer with a threaded 1" connection to be mounted from 20 to 48 cm (8 to 19") high, and from 41 to 108 cm (16 to 43") out past the mounting.



FMS-350
Bridge Channel Bracket, Floor Mount

Allows any transducer with a threaded 1" connection to be mounted from 20 to 48 cm (8 to 19") high, anywhere along a 166 cm (65") beam. This bracket is well suited for large OCM applications by providing a very stable mount for the transducer above a flume or weir.